

4-Legged Understructure Seat Replacement Instructions

Back Rest

Full Lumbar support

“J” Bar

Heavy-Duty

Molded Ergonomic Seat

“Memory Retention” foam

Heavy-Duty Swivel

Self Returning

Easy-Slide

Teflon® coated glides (not pictured)

GARY  PLATT

PERFORMANCE CASINO SEATING

RENO, NEVADA

4643 Aircenter Circle, Reno, Nevada 89502-5948

Toll-Free Phone: (800) 969-0999 • Toll-Free Fax: (800) 757-0788

Local Phone: (775) 824-0999 • Local Fax: (775) 824-824-0998

Seat Replacement Instructions

page 2 of 5



Photo A

1. Carefully lay the chair upside down on a table, cart, or other elevated platform. Ensure carpeting, cardboard, or other similar protection is used to help protect the seat from damage (*Photo A*).

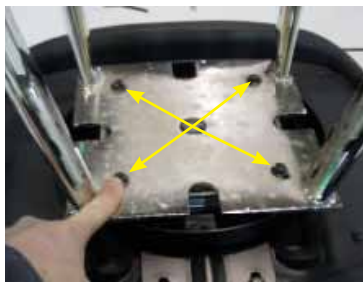


Photo B

2. Note the orientation of the frame to the seat bottom prior to removal. Remove the four (x4) Grade-8 bolts securing the understructure assembly to the swivel (*Photo B*). Discard the four (x4) Grade-8 bolts and set the understructure frame aside for re-installation in Step 8.

GARY  PLATT

PERFORMANCE CASINO SEATING

RENO, NEVADA

4643 Aircenter Circle, Reno, Nevada 89502-5948

Toll-Free Phone: (800) 969-0999 • Toll-Free Fax: (800) 757-0788

Local Phone: (775) 824-0999 • Local Fax: (775) 824-824-0998

Seat Replacement Instructions

page 3 of 5



Photo C

3. Rotate the swivel 45° and remove the four (x4) bolts securing the swivel to the seat bottom. Remove the swivel (*Photo C, shown with swivel cover*) and discard the four (x4) bolts. Set the swivel assembly aside for reinstallation (Step 7).

Caution: Edges of the swivel may be sharp and care must be taken to prevent cuts and/or injury. Gary Platt recommends the use of gloves while handling the swivel.

Note: Observe the orientation of the swivel. The nut on the top side will fit into the hole in the top plate of the understructure assembly. If attempt is made to install the swivel upside down, interference will be immediately apparent as the swivel nut will hit the “J” bar.



Photo D

Note: Depending upon the age of the chair, the swivel assembly will contain either individual spacers (*Photo D*) or a swivel cover with built-in spacers (*Photo E*). In either case, retain these parts for reassembly. For either configuration, the longer spacers must be positioned towards the front of the seat and the shorter spacers must be positioned towards the rear of the seat.



Photo E

GARY PLATT

PERFORMANCE CASINO SEATING

RENO, NEVADA

4643 Aircenter Circle, Reno, Nevada 89502-5948

Toll-Free Phone: (800) 969-0999 • Toll-Free Fax: (800) 757-0788

Local Phone: (775) 824-0999 • Local Fax: (775) 824-824-0998

Seat Replacement Instructions

page 4 of 5



Photo F

4. Remove the six (x6) bolts securing the J-Bar and seat back assembly to the seat bottom assembly (*Photo F*). Discard the six (x6) bolts. Set this assembly aside for reinstallation in Step 6.
5. Reinstall the J-Bar and seat back assembly removed in Step 5 to the new Seat Cushion Assembly using six (x6) new bolts. Snug the bolts tightly.

Note: Use only new bolts provided with the replacement kit. Certain bolts are of a different strength & grade and all bolts have a nylon patch to help ensure the bolts remain in place.

6. Reinstall the swivel assembly to the new seat cushion assembly using four (x4) new bolts. Snug all bolts tightly. Pay particular attention to the orientation of the spacers and/or swivel cover as removed in Step 4.
7. Reinstall the understructure frame removed in Step 3 using four (x4) new Grade-8 bolts with washers and nylon patch. Pay particular attention to the orientation of the frame to the seat. Tighten all bolts securely.
8. Double check all new bolts for tightness. Chair is ready for service.

DISCLAIMER: The content of this document and/or any Gary Platt Manufacturing (GPM) web-site content (www.garyplatt.com), including all information, data, communications, editorial content, photos, graphics, drawings, and in general any materials and services provided herein, is the property of GPM and is protected by the applicable copyright laws.

Furthermore, suppliers MUST strictly follow any and all instructions or damage to the property and/or injury may occur.

GARY  **PLATT**

PERFORMANCE CASINO SEATING

RENO, NEVADA

4643 Aircenter Circle, Reno, Nevada 89502-5948

Toll-Free Phone: (800) 969-0999 • Toll-Free Fax: (800) 757-0788

Local Phone: (775) 824-0999 • Local Fax: (775) 824-824-0998

Seat Replacement Instructions

page 5 of 5

DISCLAIMER: The content of this document and/or any Gary Platt Manufacturing (GPM) web-site content (www.garyplatt.com), including all information, data, communications, editorial content, photos, graphics, drawings, and in general any materials and services provided herein, is the property of GPM and is protected by the applicable copyright laws.

Furthermore, suppliers **MUST** strictly follow any and all instructions or damage to the property and/or injury may occur.

GARY  **PLATT**

PERFORMANCE CASINO SEATING

RENO, NEVADA

4643 Aircenter Circle, Reno, Nevada 89502-5948

Toll-Free Phone: (800) 969-0999 • Toll-Free Fax: (800) 757-0788

Local Phone: (775) 824-0999 • Local Fax: (775) 824-824-0998